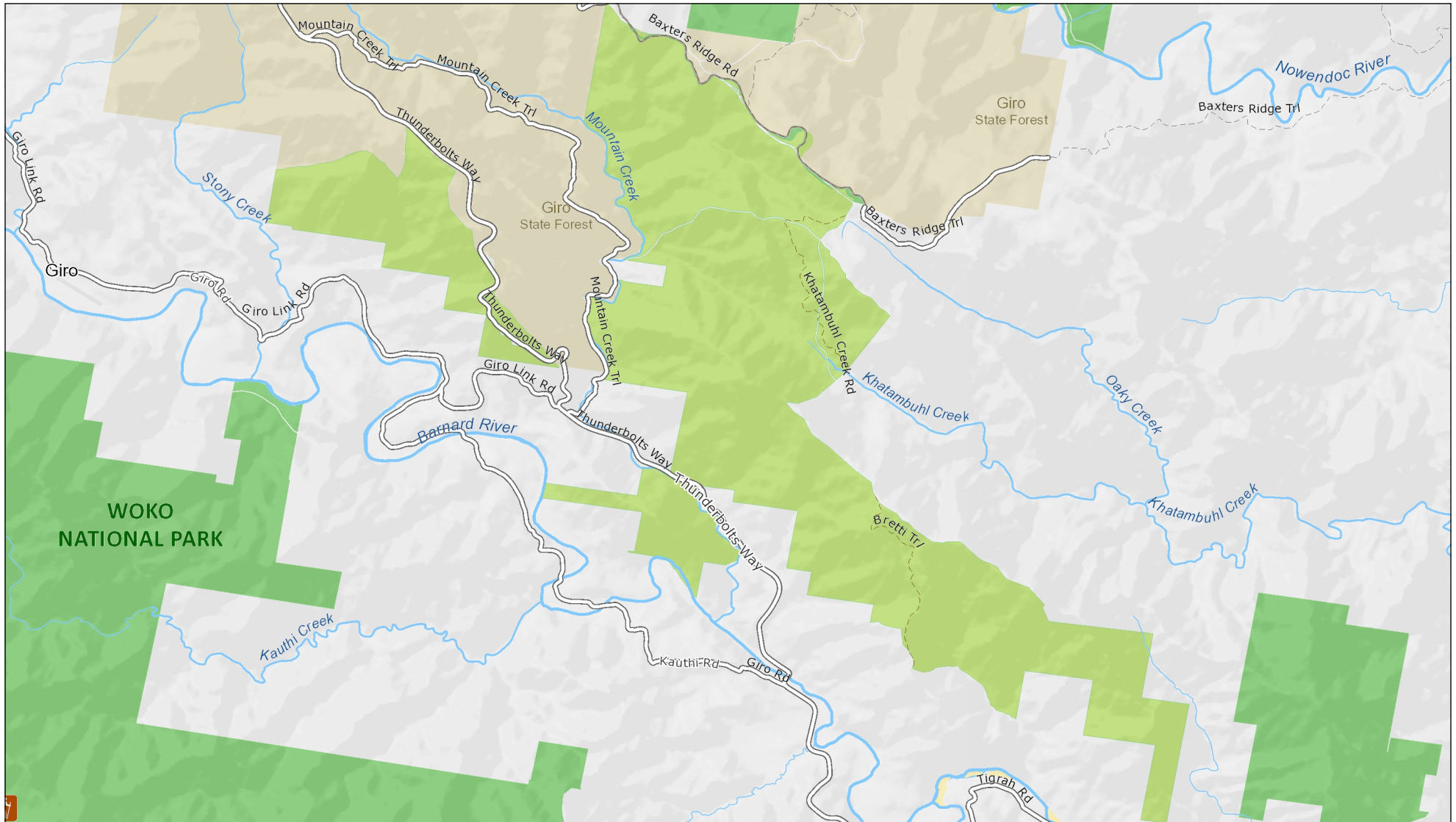




# Bretti Nature Reserve

Overview map



**MAP INFORMATION**  
This map does not provide detailed information on topography, alerts or opening times and may not be suitable for some activities.  
Map Published: 03-May-2021



|   |   |   |  |
|---|---|---|--|
|  Feature Park/section   |  Other NPWS reserve                            |  Mount/Peak/Hill                 |  Waterfall                      |
|  Track                  |  Management trail<br>(no motor vehicle access) |  Motorway                        |  Primary road                   |
|  Arterial road          |  Sub-arterial road                             |  Distributor road                |  Local road                     |
|  Sealed road            |  Unsealed road                                 |  Feature route                   |  Railway                        |
|  Watercourse            |  Waterbody                                     |  Marine Park/<br>Aquatic Reserve |  Firearms range/<br>Danger area |
| <b>Attractions and activities</b>   |   | <b>Facilities</b>   |  |
|  Aboriginal site        |  Adventure sports location                     |  Accommodation                   |  Train station                  |
|  Birdwatching spot      |  Boating location                              |  Boat ramp                       |  Bus station                    |
|  Campground             |  Canoe/Kayak location                          |  Café/kiosk                      |  Ferry wharf                    |
|  Cave entrance          |  Fishing spot                                  |  Education centre                |  Airport                        |
|  Historic site        |  Lookout                                     |  Picnic area                   | <b>Warnings</b>  |
|  Snow sports facility |  Surfing spot                                |  Venue                         |  Gate – may be locked         |
|  Swimming spot        |  Visitor centre                              |   |  Warning                      |
|  Canoe/Kayak route    |  Car touring route                           |   |  |
|  Cycling trail        |  Horse riding trail                          |   |  |
|  Snow trail           |  Walking track                               |   |  |
|  4WD touring route    |   |   |  |

Photo: Mount Kaputar National Park (Simone Cottrell/DFIE)

Explore the NSW  
**National Parks**  
 app

Download your next adventure

Get GPS-enabled maps and information on over 225 national parks in the NSW National Parks app. Download a park to navigate its map without an internet connection.

GET IT ON  
 Google Play

Download on the  
 App Store

nswparks.info/app