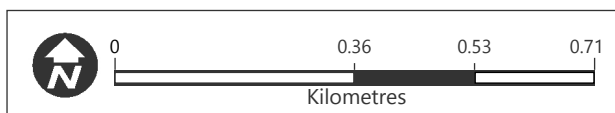
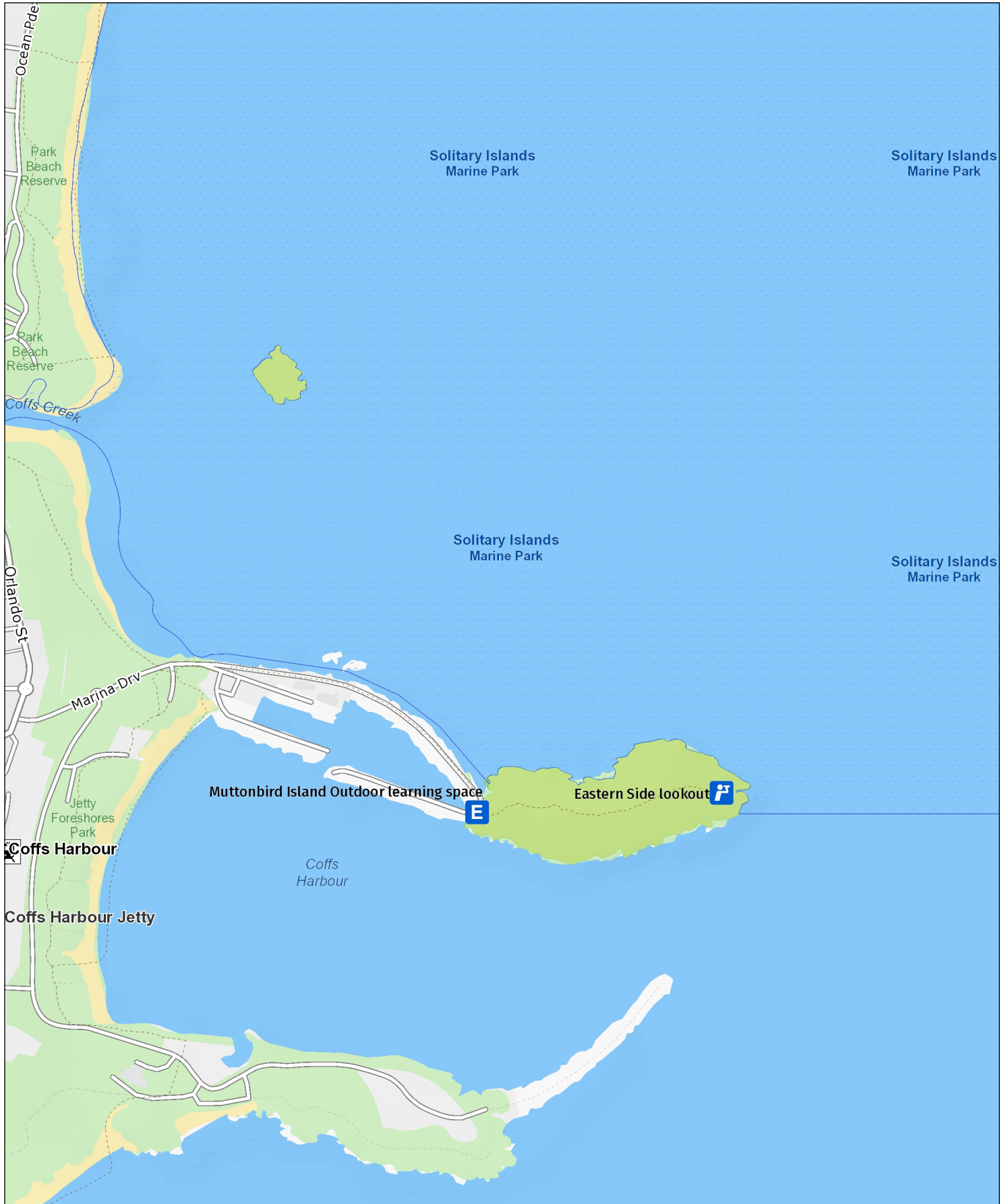




Muttonbird Island Nature Reserve

Overview



MAP INFORMATION
This map does not provide detailed information on topography, alerts or opening times and may not be suitable for some activities.
Map Published: 28-Jan-2022



| | | | |
|---|---|---|--|
|  Feature Park/section |  Other NPWS reserve |  Mount/Peak/Hill |  Waterfall |
|  Track |  Management trail (no motor vehicle access) |  Motorway |  Primary road |
|  Arterial road |  Sub-arterial road |  Distributor road |  Local road |
|  Sealed road |  Unsealed road |  Feature route |  Railway |
|  Watercourse |  Waterbody |  Marine Park/ Aquatic Reserve |  Firearms range/ Danger area |
| Attractions and activities | | Facilities | |
|  Aboriginal site |  Adventure sports location |  Accommodation |  Train station |
|  Birdwatching spot |  Boating location |  Boat ramp |  Bus station |
|  Campground |  Canoe/Kayak location |  Café/kiosk |  Ferry wharf |
|  Cave entrance |  Fishing spot |  Education centre |  Airport |
|  Historic site |  Lookout |  Picnic area | Warnings |
|  Snow sports facility |  Surfing spot |  Venue |  Gate – may be locked |
|  Swimming spot |  Visitor centre | |  Warning |
|  Canoe/Kayak route |  Car touring route | | |
|  Cycling trail |  Horse riding trail | | |
|  Snow trail |  Walking track | | |
|  4WD touring route | | | |

Photo: Mount Kaputar National Park (Simone Cottrell/DFIE)

Explore the NSW
National Parks
 app

Download your next adventure

Get GPS-enabled maps and information on over 225 national parks in the NSW National Parks app. Download a park to navigate its map without an internet connection.

GET IT ON
 Google Play

Download on the
 App Store

nswparks.info/app